



Kilsaran International ROI
Piercetown
Dunboyne
Co. Meath
Ireland

T: 01 802 6300
E: info@kilsaran.ie

kilsaran.ie

Kilsaran International UK
2nd Floor Lowry Mill
Less Street
Pendlebury
Swinton, Manchester
M276DB

T: 0161 872 8899
E: info@kilsaraninternational.co.uk
kilsaraninternational.co.uk

Kilsaran
INTERNATIONAL

Kilsaran INTERNATIONAL

DRY MORTAR PRODUCTS



create

DRY MORTAR PRODUCTS

Kilsaran
INTERNATIONAL



Introduction

For over five decades Kilsaran International has supplied its innovative construction products to the commercial market helping shape the landscape in both Ireland and the UK. Whether building a new home, or specifying a product for a multi-million euro project, Kilsaran Dry Mortar Products provide peace of mind, through superior quality products formulated, designed and produced by experts, for experts.

We are the natural choice for architects, specification and construction professionals seeking solutions to their construction materials requirements. Our extensive range of high quality Dry Mortar Products are backed with unrivalled technical support along with competitive pricing. This means that we can provide our customers with a full support service guaranteeing a professional service and speedy delivery every time.



Contents

> Mortars	8	> Micro Concretes	22
Masonry Mortar	9	Post 10	23
Coloured Masonry Mortar	10	Multi Purpose Concrete	24
Hydraulic Lime Mortar	11	Rapid Setting Concrete	25
Roof Tile Mortar	12		
Cladding Mortar	13		
> Renders	14	> Screeds	26
One Coat Render	15	Cemfloor	27
DuraRend	16	Sand & Cement (standard)	28
GP Render	17	Sand & Cement (polymer modified)	29
Super Bond Render	18		
Dash Receiver	19		
Hydraulic Lime Render	20		



>	Sand & Cement/Bedding Mixes	30	>	Grouts	40
	General Purpose Sand & Cement	31		NSG 2601	41
	Patio Bedding Mix	32		Dry Pack 50	42
>	Streetscape	34	>	Repair Mortars	43
	High-Strength Bedding Concrete	35		ProFix 100	44
	Priming Slurry	36		EasyFix	45
	Rapid-Set Jointing Mortar	37		Pavement Repair Concrete	46
	RRC 60	38			
	T60 Rapid Bedding Mortar	39			



About Kilsaran

Kilsaran International are the market leader in dry mortar products and systems. Founded in 1964, Kilsaran are a well-established and trusted name within the construction industry. We pride ourselves on our vast product range and tightly controlled processes, with specific emphasis placed on quality, service, sustainability and above all customer needs.



Facility

Our production facility, commissioned in 2006, is a state-of-the-art computerised plant which has an annual output capacity in excess of 100,000 tonnes, and has the ability to package 1400 bags of product every hour.

We have invested heavily in our on-site laboratories, allowing us to carry out a vast range of analysis, testing, research and development of dry mortar products.

Our Team

Kilsaran International has a Dry Products team consisting of production staff, and technical personnel with engineering backgrounds and unrivalled experience in dry mortar products and systems spanning 20 years. Our technical team are responsible for the research and development of our new products, the on-going testing and analysis of our products and assisting our clients in the specification and use of our product range.



➤ Product Quality

At Kilsaran we know that product quality begins with sourcing and utilising quality raw materials. All constituent raw material in our Dry Products are rigorously tested and scrutinised to the most current material standards; EN 197—Cement, EN 13139—Aggregates for Mortar, EN 459—Building Lime etc. Kilsaran Dry Products are all manufactured in accordance to the requirements of the national and European product standards. These include, EN 998-1—Rendering and Plastering Mortars, EN998-2—Masonry Mortars, EN13813—Screed Materials, and BS 7533— Pavements Constructed with clay, natural stone or concrete pavers.

➤ Accreditation

Kilsaran International has a number of accredited management systems and products, covering the entire range of Dry Products. All Kilsaran Dry Products are manufactured and processed in a ISO 9001 Quality Management System, an ISO 14001 Environmental Management System. and an ISO 50001 Energy Management System. Kilsaran also hold a third party Factory Production Control Certificate for their masonry mortar products in accordance with EN998-1 and EN 998-2, to ensure compliance with CE Marking of construction products in accordance to CPR (EU) No. 305/2011.

➤ Delivery

As a group Kilsaran International have a fleet of over 300 delivery vehicles. These range from specialist silo delivery and refill lorries, to crane assisted flat beds and curtain sided articulated lorries. Our extensive range of fleet, coupled with a highly experienced and efficient logistics team ensures prompt delivery of our products across Ireland and the UK.

➤ Sustainability

Being environmentally friendly is not new to us at Kilsaran. Our products are produced in a state-of-the-art plant, which was designed to achieve the highest environmental processing standards. Our products are produced using eco friendly raw materials and our plant and process are ISO 14001 certified. Kilsaran are committed to continuously improving their environmental processes and reducing their carbon footprint.



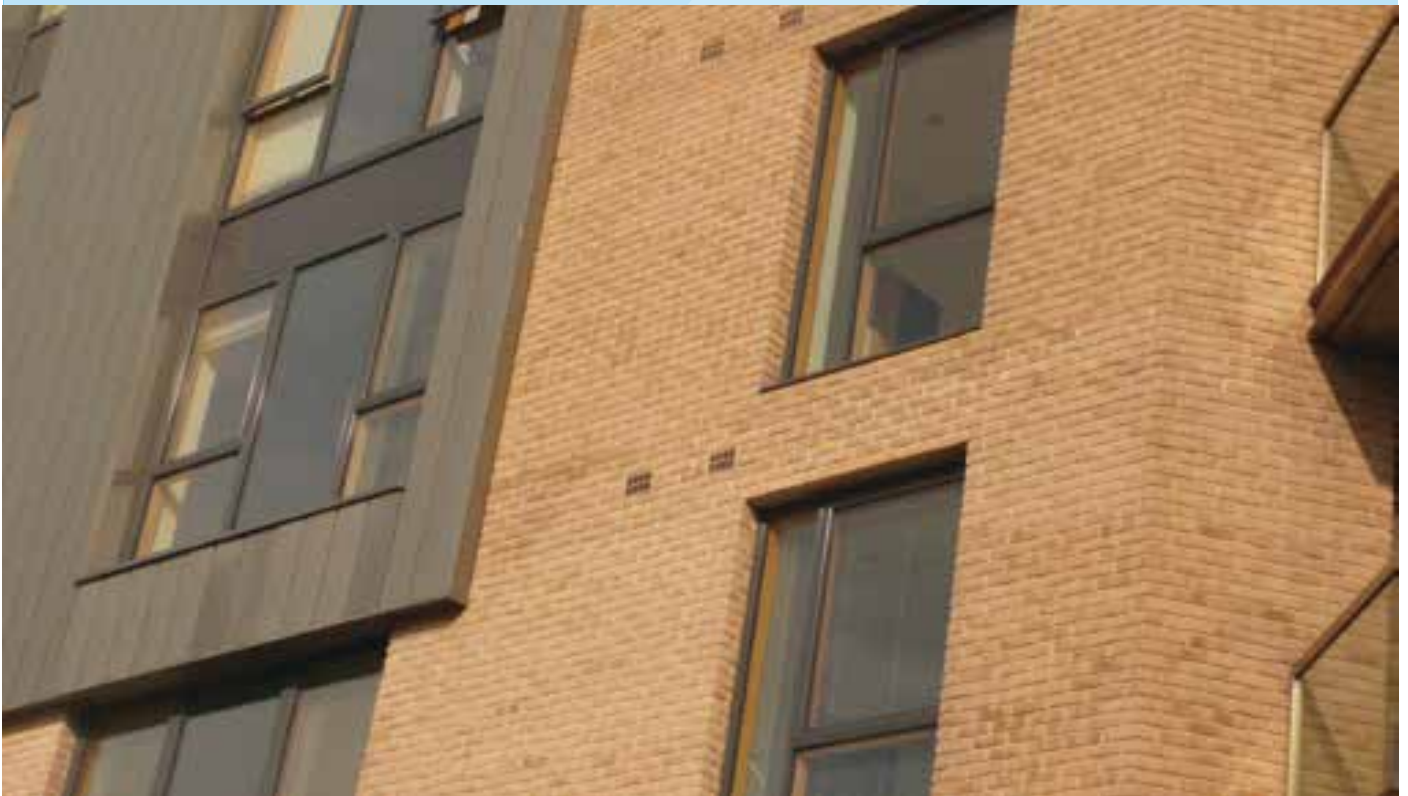
Mortars

Developed in Germany over 60 years ago, dry mortar and dry mortar systems have become the dominant and most trusted forms of mortars in a multitude of countries worldwide. Kilsaran are the market leaders in dry mortar technology and provide the most comprehensive portfolio of dry mortar products. Kilsaran's dedicated staff has dry mortar expertise spanning 20 years and is committed to helping you find the most suitable mortar product for your project.

Kilsaran mortars are produced in an ISO 9001, 14001 and 50001 controlled environment and all our masonry mortars are CE marked in accordance to the new Construction Products Regulation 305/2011.

Kilsaran masonry mortars are produced in accordance with the requirements of EN 998-2, and are available as designed mortars or prescribed mortars in designed and prescribed mixes as set out in EN 1996 (Eurocode 6) and the newly published SR 325.

Whether building a new home, or specifying a product for a multi-million euro project, Kilsaran dry mortars, provide peace of mind, through superior quality products formulated, designed and produced by experts for experts.





Masonry Mortar

Product Use

Kilsaran Masonry Mortars are General Purpose masonry mortars suitable for use with most common brick work and block work applications.

Benefits

This product offers many advantages over conventional site-mixed or ready-mixed mortar:

- Constantly available supply
- Eliminates inaccurate site mixing
- Reduced labour
- Increases site efficiency

Technical Data

Kilsaran Masonry Mortars are produced in an ISO 9001 quality-controlled environment to the requirements of a general purpose masonry mortar as set out in EN 998-2, Kilsaran masonry mortars are available in a range of strength classes to suit your specification.

EN 998-2

Prescribed and/or Designed general purpose masonry mortar for internal and external use in elements subject to structural requirements.

Compressive Strength	M2	M4	M6	M12
Initial Shear Strength	0.15 N/mm ² (tab.value)	0.15 N/mm ² (tab.value)	0.15 N/mm ² (tab.value)	0.15 N/mm ² (tab.value)
Contents of Chloride	≤ 0.1%	≤ 0.1%	≤ 0.1%	≤ 0.1%
Reaction to Fire	Class A1	Class A1	Class A1	Class A1
Water Absorption	0.7 kg/m ² .min ^{0.5}	0.7 kg/m ² .min ^{0.5}	0.1 kg/m ² .min ^{0.5}	0.1 kg/m ² .min ^{0.5}
Water Vapour Permeability	μ 15/35	μ 15/35	μ 15/35	μ 15/35
Thermal Conductivity	(λ10, dry) 0.61 W/mK	(λ10, dry) 0.47 W/mK	(λ10, dry) 0.61 W/mK	(λ10, dry) 0.61 W/mK
Durability (against freeze - thaw)	Evaluation based on provisions valid in the intended place of use of the mortar.			

EN 1996-1 (EC6)

Acceptable Assumed Equivalent Mixes for Prescribed Mortars.

Compressive Strength Class	Equivalent Prescribed Masonry Mortars		
	Cement:Lime:Sand	Cement:Sand	Designation
M12	1:0¼:3	-	(i)
M6	1:½:4¼	1:3/4	(ii)
M4	1:1:5/6	1:5/6	(iii)
M2	1:2:8/9	1:7/8	(iv)



Health & Safety

As with all cementitious-based materials and products, care must be taken to avoid contact with the skin. Please see the relevant Material Safety data Sheet online at www.kilsaran.ie.

Availability

- 25Kg bags
- Silos



For our latest news & offers log onto kilsaran.ie or kilsaraninternational.co.uk





Coloured Masonry Mortar

Product Use

Kilsaran Coloured Masonry Mortars are general purpose masonry mortars suitable for use with most common brick work and block work applications.

Benefits

This product offers many advantages over conventional site-mixed or ready-mixed mortar:

- Computerised batching ensures colour consistency
- Wide range of colours available
- Eliminates inaccurate site mixing

Technical Data

Kilsaran Coloured Masonry Mortars are produced in an ISO 9001 quality-controlled environment to the requirements of a general purpose masonry mortar as set out in EN 998-2, Kilsaran coloured masonry mortars are M4 or designation (iii) mortars as standard. However they are available in a range of strength classes to suit your specification.

EN 998-2

Prescribed and/or Designed general purpose masonry mortar for internal and external use in elements subject to structural requirements.

Compressive Strength	M 4	M4 (White Sand/White Cement)
Initial Shear Strength	0.15 N/mm ² (tab.value)	0.15 N/mm ² (tab.value)
Contents of Chloride	≤ 0.1%	≤ 0.1%
Reaction to Fire	Class A1	Class A1
Water Absorption	0.7 kg/m ² .min ^{0.5}	0.2 kg/m ² .min ^{0.5}
Water Vapour Permeability	μ 15/35	μ 15/35
Thermal Conductivity	(λ10, dry) 0.47 W/mK	(λ10, dry) 0.61 W/mK (tab.)
Durability (against freeze - thaw)	Evaluation based on provisions valid in the intended place of use of the mortar.	

EN 1996-1 (EC6) Acceptable Assumed Equivalent Mixes for Prescribed Mortars

Compressive Strength Class	Equivalent Prescribed Masonry Mortars		
	Cement:Lime:Sand	Cement:Sand	Designation
M12	1:0¾:3	-	(i)
M6	1:½:4/4½	1:3/4	(ii)
M4	1:1:5/6	1:5/6	(iii)
M2	1:2:8/9	1:7/8	(iv)



Health & Safety

As with all cementitious-based materials and products, care must be taken to avoid contact with the skin. Please see the relevant Material Safety data Sheet online at www.kilsaran.ie.

Availability

- 25Kg bags
- Silos



➤ See our colour sample panel for more details on the range available





Hydraulic Lime Mortar

Product Application

Kilsaran Hydraulic Lime Mortars are general purpose mortars suitable for use with most common brick work, block work and stone work applications. They are flexible and breathable making them ideal for use in new building work and also the restoration of old and historic buildings.

Product Use

Kilsaran Hydraulic Lime Mortars should be mixed with clean potable water until a creamy workable mix is achieved. Our hydraulic lime mortars should be used in accordance with the Foresight Best Practice Guide (published by Donhead 2003).

Benefits

This product offers many advantages over conventional site-mixed or ready-mixed mortar:

- Consistently high quality
- Environmentally friendly
- Eliminates inaccurate site mixing
- Breathable and flexible
- Ideal for restoration projects
- Convenient and user-friendly
- Eliminates wastage
- Promotes cleaner and safer sites

Technical Data

Kilsaran Hydraulic Lime Mortars are produced in an ISO 9001 quality-controlled environment to the requirements of a general purpose masonry mortar as set out in EN 998-2, Kilsaran Hydraulic Lime mortars are available in a range of strength classes to suit your specification.

EN 998-2

Designed general purpose masonry mortar for internal and external use in elements subject to structural requirements

Compressive Strength (28 days)	M1
Compressive Strength (91 days)	2.5 N/mm ²
Initial Shear Strength	0.15 N/mm ² (tab. value)
Contents of Chloride	
Reaction to Fire	Class A1
Water Absorption	NPD
Water Vapour Permeability	μ 15/35
Thermal Conductivity	(λ10, dry) 0.61 W/mK (tab. value P=50%)
Durability (against freeze - thaw)	Evaluation based on provisions valid in the intended place of use of the mortar.

Due to the more gradual strength development of natural hydraulic lime mortars, in comparison with Portland cement based mortars, the overall compressive strength of the mortar is typically assessed at 91 days.



Health & Safety

As with all building materials and products, care must be taken to avoid contact with the skin. Please see the relevant Material Safety data Sheet online at www.kilsaran.ie.

Availability

- 25Kg bags
- Silos



For our latest news & offers log onto kilsaran.ie or kilsaraninternational.co.uk





Roof Tile Mortar

Product Application

Kilsaran Roof Tile Mortar is a mortar mix suitable for use in the bedding of clay and concrete roof tiles and ridge tiles.

Product Use

Kilsaran Roof Tile Mortar should be mixed with clean potable water to create a workable mortar mix. Slight water adjustments may be required to obtain the desired consistency. Excessive addition of water will weaken the mix considerably. Apply the freshly mixed mortar in a ribbon on either side of the roof ridge and firmly place the ridge tile in position. Ensure to fill in all joints between ridge tiles and apply a tooled finish.

Benefits

This product offers many advantages over conventional site-mixed or ready-mixed concretes:

- Consistently high quality mix
- Eliminates inaccurate site mixing
- Consistent colour
- Convenient and user-friendly
- Eliminates wastage
- Promotes cleaner and safer sites

Technical Data

Kilsaran Roof Tile Mortar is produced in an ISO 9001 quality-controlled environment to the requirements of a mortar as set out in section 2.15 of BS 5534 –Code of Practice for Slating and Tiling. Kilsaran Roof Tile Mortar is available in a range of colours to match and compliment most major and common roof tile product.

Mix Ratio (Cement:Sand)	1:3
Compressive Strength	>12 N/mm ²
Colour	Range Available



Health & Safety

As with all cementitious-based materials and products, care must be taken to avoid contact with the skin. Please see the relevant Material Safety data Sheet online at www.kilsaran.ie.

Product Yield

Approximately 4kg/m
(1 bag = approximately 0.015m³)

Availability

- 25Kg bags
- Colour Range Available



For our latest news & offers log onto kilsaran.ie or kilsaraninternational.co.uk





Cladding Mortar

Our superior quality pre-mixed Cladding Mortar is produced at our state-of-the-art production facility at Brownstown in Co. Kildare. The product is manufactured using dried sands, lime, cement and additives. All constituent materials comply with the requirements of the relevant and current Irish, British and European standards and specifically EN 998-2:2003.

Product Application

Prior to application over unpainted and unsealed concrete and masonry surfaces, all loose material, dirt, dust, grease and efflorescence must be removed. Paint and sealers must be completely removed.

Dampen the concrete, masonry or scratch coat substrate with a fine spray of water, but do not soak. Use a trowel to apply a layer of mortar on the substrate, and a thick base of Cladding Mortar on the back of the cladding stone.

When installing large stone on a vertical surface, apply a thick ring of mortar around the back of each stone, leaving a void in the centre to create a vacuum as you press the stone into place; start at the bottom of the wall and brace each stone as you go up.

Stone must be set within 20 minutes of applying mortar bed. Press the cladding stone firmly into the mortar bed in a twisting motion. Joints between stones should be a consistent 12 mm or less.

Product Use

Kilsaran Cladding Mortar is designed for;

- Interior and exterior walls
- Application of lightweight veneer stone, cladding stone, brick slips, sills etc.

Benefits

This product offers many advantages over conventional site-mixed or readymixed mortar:

- Consistently high quality
- Constantly available supply
- Eliminates inaccurate site mixing
- Reduction in labour
- Increases site efficiency
- Convenient and user-friendly
- Eliminates wastage
- Promotes cleaner and safer sites

Technical Data

Our Cladding Stone Mortar is produced in an ISO 9001 quality-controlled environment. The product is supplied in a natural grey colour but other colours are available on request. Our Cladding Stone Mortar is intended for use internally or externally on suitably prepared backgrounds, such as, a concrete block or a bonding render scratch coat and it will exceed the strength requirements of a designation (i) mortar.

EN 998-2

Designed general purpose masonry mortar for internal and external use in elements subject to structural requirements

Compressive Strength (N/mm ²) @ 28 days	> 8.0
Density (Kg/m ³)	1750
Water Retention	> 75%
Colour Other colours available on request	Standard Grey



Health & Safety

As with all cementitious-based materials and products, care must be taken to avoid contact with the skin. Please see the relevant Material Safety Data Sheet online at www.kilsaran.ie.

Availability

- 25Kg bags



➤ For our latest news & offers log onto kilsaran.ie or kilsaraninternational.co.uk



Renders

As a market leader in dry mortar products, Kilsaran offer an extensive range of pre-mixed rendering mortars. Produced in an ISO 9001, 14001 and 50001 controlled environment, all Kilsaran render products are CE marked in accordance to the new Construction Product Regulation 305/2011. All Kilsaran rendering mortars also have their factory production control independently certified to EN 998-1 further demonstrating their superior quality and stringently controlled production processes.

Kilsaran's extensive range of renders provides customers, designers and specifiers with a full range of façade solutions. Whether looking for preparatory products, undercoats or coloured decorative finish coat renders, Kilsaran have a render to suit your needs.

Kilsaran rendering mortars are produced in accordance with the requirements of EN 998-1, and are available in the strength classifications as set out in the European standard. Kilsaran rendering mortars are designed for use in accordance with EN 13914. All our rendering mortars are formulated to provide excellent adhesion, superior crack resistance and superb durability.

Whatever the project, choosing a Kilsaran render as part of your façade solution ensures consistency, durability and an un-rivalled aesthetic finish.





One-Coat Render

Product Application

Kilsaran One Coat Renders are through coloured decorative rendering mortars designed for single coat application to most common brick work and block work backgrounds.

Product Use

Kilsaran One Coat Renders are formulated for both hand and machine application. Please note it is recommended that One Coat renders are given a scraped texture finish to ensure colour conformity finish. The minimum finished thickness of Kilsaran One Coat renders should be no less than 15mm. For further information on the application of our One Coat Renders please see our One Coat Render Application Guide. In all instances Kilsaran One Coat Renders should be used and applied in strict accordance to EN 13914, Eurocode 6 and SR325 and the manufacturers instructions.

Benefits

This product offers many advantages over conventional site-mixed or ready-mixed rendering mortars:

- Increased productivity
- Integrated algacide to inhibit growth
- Eliminates inaccurate site mixing
- Excellent workability and adhesion
- Low shrinkage/good crack resistance

Technical Data

Kilsaran One Coat Renders are produced in an ISO 9001 quality-controlled environment to the requirements of a one coat render as set out in EN 998-1. Kilsaran One Coat Renders are a CS III render as standard, however they are available in all strength classifications as set out in EN 998-1. Kilsaran One Coat Renders are manufactured in a third party certified EN 998-1 factory production controlled environment and hold NSAI Agreement certification

EN 998-1

One coat rendering mortar (OC) for use in external rendering and internal plastering.

Compressive Strength	Category CS III
Reaction to Fire	Class A1
Water Absorption	W2
Water Vapour Permeability	$\mu < 10$
Water Vapour Permeability After Weathering Cycles	$< 1\text{ml/cm}^2$ after 48 Hours
Adhesion After Weathering Cycles	$> 0.2\text{Nmm}^2$
Thermal Conductivity	($\lambda 10$, dry) 0.47 W/mK (tab.)
Durability (against freeze - thaw)	Evaluation based on provisions valid in the intended place of use of the mortar.



Health & Safety

As with all cementitious-based materials and products, care must be taken to avoid contact with the skin. Please see the relevant Material Safety data Sheet online at www.kilsaran.ie.

Product Yield

Approximately
1.9kg/mm²

Availability

- 25Kg bags
- Colour Sample Available



Tip: Application Guide and Colour Sample Panel available.





DuraRend

Product Application

Kilsaran DuraRend is a natural grey coloured rendering mortar designed for single coat application to most common brick work and block work backgrounds. Our DuraRend is suitable for finishing with scraped, sponge float or nap finishes.

Product Use

Kilsaran DuraRend is formulated for both hand and machine application. Please note whilst DuraRend can be given a sponged, float or nap finish, slight colour shading may occur due to the nature of these finishes. It is therefore recommended that the finished render surface is painted or given a decorative finish. The minimum finished thickness of Kilsaran DuraRend should be no less than 15mm. For further information on the application of DuraRend please see our DuraRend Application Guide. In all instances Kilsaran DuraRend should be used and applied in strict accordance to EN 13914, Eurocode 6 and SR325 and the manufacturers instructions.

Benefits

This product offers many advantages over conventional site-mixed or ready-mixed rendering mortars:

- Increased productivity due to one coat application
- Eliminates inaccurate site mixing
- Excellent workability and adhesion
- Low shrinkage/good crack resistance
- Suitable as float coat

Technical Data

Kilsaran DuraRend is produced in an ISO 9001 quality-controlled environment to the requirements of a one coat render as set out in EN 998-1. Kilsaran DuraRend is a CS III render as standard, however they are available in all strength classifications as set out in EN 998-1. Kilsaran DuraRend is manufactured in a third party certified EN 998-1 factory production controlled environment and hold NSAI Agreement certification

EN 998-1

One coat rendering mortar (OC) for use in external rendering and internal plastering.

Compressive Strength	Category CS III
Reaction to Fire	Class A1
Water Absorption	W2
Water Vapour Permeability	$\mu < 10$
Water Vapour Permeability After Weathering Cycles	$< 1\text{ml/cm}^2$ after 48 Hours
Adhesion After Weathering Cycles	$> 0.2\text{mm}^2$
Thermal Conductivity	(λ_{10} , dry) 0.61 W/mK (tab.)
Durability (against freeze - thaw)	Evaluation based on provisions valid in the intended place of use of the mortar.



Health & Safety

As with all cementitious-based materials and products, care must be taken to avoid contact with the skin. Please see the relevant Material Safety Data Sheet online at www.kilsaran.ie.

Product Yield

Approximately
1.9kg/mm/m²

Availability

- 25Kg bags
- Silos



➤ For our latest news & offers log onto kilsaran.ie or kilsaraninternational.co.uk





GP Render

Product Application

Kilsaran GP Render is a general purpose rendering mortar designed for multi coat render systems. Kilsaran GP Render is formulated for use as a backing coat (scratch) and finishing top coat in external rendering and internal plastering.

Product Use

Kilsaran GP Renders are suitable for both hand and machine application. In all instances Kilsaran GP Render should be used and applied in strict accordance to EN 13914, Eurocode 6 and SR325 and the manufacturers instructions. No scud coat is required when applied by a spray rendering machine, however if the material is being hand applied Kilsaran recommend the use of a suitable scud coat. For further information on the application of our Renders please contact the Kilsaran technical team.

Benefits

This product offers many advantages over conventional site-mixed or ready-mixed rendering mortars:

- Consistently high quality mix
- Constantly available supply
- Increased productivity
- Eliminates inaccurate site mixing
- Excellent workability and adhesion
- Low shrinkage/good crack resistance
- Convenient and user-friendly
- Eliminates wastage
- Promotes cleaner and safer sites

Technical Data

Kilsaran GP Render is produced in an ISO 9001 quality-controlled environment to the requirements of a one coat render as set out in EN 998-1. Kilsaran GP Render is a CS III render as standard, however they are available in all strength classifications as set out in EN 998-1. Kilsaran GP Render is manufactured in a third party certified EN 998-1 factory production controlled environment and hold NSAI Agreement certification.

EN 998-1

General Purpose rendering mortar (GP) for use in external rendering and internal plastering.

Compressive Strength	Category CS III
Reaction to Fire	Class A1
Water Absorption	W2
Water Vapour Permeability	$\mu < 10$
Adhesion	$>0.2\text{mm}^2$
Thermal Conductivity	(λ_{10} , dry) 0.67 W/mK
Durability (against freeze - thaw)	Evaluation based on provisions valid in the intended place of use of the mortar.



Health & Safety

As with all cementitious-based materials and products, care must be taken to avoid contact with the skin. Please see the relevant Material Safety data Sheet online at www.kilsaran.ie.

Product Yield

Approximately
1.9kg/mm/m²

Availability

- 25Kg bags
- Silos



For our latest news
& offers log onto
kilsaran.ie or
kilsaraninternational.co.uk





Super Bond Render

Product Application

Kilsaran Super Bond Render is a highly polymer modified preparatory treatment render designed to provide a key coat on smooth, low suction and friable backgrounds. Kilsaran Super Bond Render can also be used for equalizing suction on highly porous or dissimilar backgrounds. Once cured, Kilsaran Super Bond Render hardens to produce a high quality substrate for follow on render coats.

Product Use

Kilsaran Super Bond Render is suitable for both hand and machine application. The dry product should be mixed with clean potable water to produce a creamy rendering mortar. Apply a tight 4-5mm coat of render to the background and stipple by working the product into the surface with a hand brush. Alternatively the render can be applied to the background at a 4-5mm thickness and combed/raked with a plastering comb to provide a key.

Benefits

This product offers many advantages over conventional site-mixed or ready-mixed rendering mortars:

- Eliminates inaccurate site mixing
- Excellent adhesion to smooth and low suction backgrounds
- Equalises suction on dissimilar backgrounds
- Low shrinkage/good crack resistance

Technical Data

Kilsaran Super Bond Render is produced in an ISO 9001 quality-controlled environment to the requirements of a render as set out in EN 998-1:2010.

EN 998-1

Proprietary rendering mortar for use in external rendering and internal plastering.

Compressive Strength	Category CS IV
Reaction to Fire	Class A1
Water Absorption	W2
Water Vapour Permeability	$\mu < 10$
Adhesion	0.70 MPa (A)
Thermal Conductivity	(λ_{10} , dry) 0.61 W/mK (tab.)
Durability (against freeze - thaw)	Evaluation based on provisions valid in the intended place of use of the mortar.



Health & Safety

As with all cementitious-based materials and products, care must be taken to avoid contact with the skin. Please see the relevant Material Safety data Sheet online at www.kilsaran.ie.

Product Yield

Approximately
1.9kg/mm/m²

Availability

- 25Kg bags



➤ For our latest news & offers log onto kilsaran.ie or kilsaraninternational.co.uk





Dash Receiver

Product Application

Kilsaran Dry Dash Receiver is a through coloured rendering mortar designed as a backing coat for receiving dashing stone. It is formulated to give an extended open time allowing the dashing stone to be received with greater ease and less rebound.

Product Use

Kilsaran Dry Dash Receiver is suitable for both hand and machine application. The fresh product should be applied over a suitably prepared and cured render undercoat. Kilsaran Dry Dash Receiver should be applied in 7-10mm coat and levelled using a straight edge or darby. Dashing stone should be evenly applied to the freshly rendered surface and tamped into place with a wooden float if required.

Benefits

This product offers many advantages over conventional site-mixed or ready-mixed rendering mortars:

- Use over GP Render
- Eliminates inaccuracy of site mixing
- Extended open time.
- Low shrinkage/good crack resistance
- Choice of colours available

Technical Data

Kilsaran Dash Receiver is produced in an ISO 9001 quality-controlled environment to the requirements of a coloured render (CR) as set out in EN 998-1.

EN 998-1

Coloured rendering mortar for use as a render coat to receive dashing stone in external rendering

Compressive Strength	Category CS III
Reaction to Fire	Class A1
Water Absorption	W0
Water Vapour Permeability	$\mu < 10$
Adhesion	$>0.2\text{Nmm}^2$
Thermal Conductivity	(λ_{10} , dry) 0.61 W/mK (tab.)
Durability (against freeze - thaw)	Evaluation based on provisions valid in the intended place of use of the mortar.



Health & Safety

As with all cementitious-based materials and products, care must be taken to avoid contact with the skin. Please see the relevant Material Safety data Sheet online at www.kilsaran.ie.

Product Yield

Approximately
1.9kg/mm/m²

Availability

- 25Kg bags



➤ Kilsaran also stock
Dashing Stone





Hydraulic Lime Render

Product Application

Kilsaran Hydraulic Lime Render is a rendering mortar designed for multi coat render systems. Kilsaran Hydraulic Lime Render is formulated for use as a undercoat and finishing top coat in external rendering and internal plastering. It is suitable for use in new building work and in restoration work on old and historic buildings.

Product Use

Kilsaran Hydraulic Lime Renders are suitable for both hand and machine application. In all instances Kilsaran Hydraulic Lime Render should be used and applied in strict accordance to EN 13914, BS 5262, Kilsaran's Hydraulic Lime Render Application Guide and the Foresight Best Practice Guide (Donhead 2003).

Benefits

This product offers many advantages over conventional site-mixed or ready-mixed rendering mortars:

- Environmentally friendly
- Eliminates inaccurate site mixing
- Excellent workability and adhesion
- Breathable and flexible

Technical Data

Kilsaran Hydraulic Lime Render is produced in an ISO 9001 quality-controlled environment to the requirements of a one coat render as set out in EN 998-1. Kilsaran Hydraulic Lime Render is a CS I render as standard, however they are available in all strength classifications as set out in EN 998-1. Kilsaran Hydraulic Lime Render is manufactured in a third party certified EN 998-1 factory production controlled environment.

EN 998-1
General purpose rendering mortar (GP) for use in external rendering and internal plastering.

Compressive Strength	Category CS I
Reaction to Fire	Class A1
Water Absorption	W0
Water Vapour Permeability	$\mu < 10$
Adhesion	NPD
Thermal Conductivity	(λ_{10} , dry) 0.61 W/mK
Durability (against freeze - thaw)	Evaluation based on provisions valid in the intended place of use of the mortar.



Health & Safety

As with all building materials and products, care must be taken to avoid contact with the skin. Please see the relevant Material Safety data Sheet online at www.kilsaran.ie.

Product Yield

Approximately
1.6kg/mm/m²

Availability

- 25Kg bags
- Bulk silos



➤ For our latest news
& offers log onto
kilsaran.ie or
kilsaraninternational.co.uk





Micro Concretes

For almost 50 years Kilsaran have been supplying high quality ready mixed concrete products to the construction industry. This experience, coupled with their technical expertise, gave birth to a range of pre-mixed micro concrete products for use in all construction sectors.

Kilsaran's range of pre-mixed micro concretes offers customers concrete solutions in pre-blended, pre-batched conveniently sized units. Whether looking for an ultra-fast setting product, or a customary concrete mix, Kilsaran's pre-mixed micro concretes offer a convenient, user friendly and above all, quality concreting solution.





Post 10

Product Application

Kilsaran Post 10 is a rapid setting, fine concrete mix designed for the rapid installation and anchoring of all types of timber, plastic, metal and concrete posts.

Product Use

- Dig a hole to the correct dimensions according to the post size (refer to product yield table)
- Fill the hole halfway with water and position the post vertically in the hole
- Pour Post 10 evenly into the hole and around the post up to the water level. Sprinkle any visible dry powder with water.
- Immediately adjust the level and position the post as required and support for 5 minutes, or until setting begins.
- Lightly tap the surface to remove any trapped air

Benefits

This product offers many advantages over conventional site-mixed or readymixed mortar:

- Rapid setting, final set in just 10 minutes
- Eliminates mixing, none required
- Reduction in labour
- Increases site efficiency
- Convenient and user-friendly
- Eliminates wastage
- Available in easy to use, weatherproof, 10Kg plastic bags

Product Yield

Post Size	Hole Size (WxD)	Bags Required
Round 50mm	150 X 450	0.5
	200 X 300	0.66
	200 X 600	1.5
Square 75mm	150 X 600	0.5
	200 X 600	1
	250 X 600	2
	300 X 600	3
Square 100mm	200 X 750	1
	250 X 450	1.5
	300 X 450	2
	300 X 750	3.5

Technical Data

Kilsaran Post 10 is a rapid setting fine concrete and is produced in an ISO 9001 quality controlled environment. All constituent materials comply with the relevant and current national and European standards.

Setting Time (@20°C)	5 – 10 minutes	
Density	2000 kg/m ³	
Storage life (unopened and protected)	> 12 months	
Colour	Standard Grey	
Compressive Strength	28 Days	20 N/mm ²



Health & Safety

As with all cementitious-based materials and products, care must be taken to avoid contact with the skin. Please see the relevant Material Safety data Sheet online at www.kilsaran.ie.

Availability

- 20Kg bags
- Plastic Bag



➤ For our latest news & offers log onto kilsaran.ie or kilsaraninternational.co.uk





Multi-Purpose Concrete (30N)

Product Application

Kilsaran Multi-Purpose Concrete is a fine concrete mix suitable for use in all general concrete work, both internally and externally. Our Multi-Purpose concrete is ideal for;

- Constructing or repairing footpaths, driveways, patios etc.
- House, wall and shed foundations
- Laying of draining channels and services
- All other general concrete work.

Product Use

Kilsaran Multi-Purpose Concrete should be mixed with 2.5 – 3.3 litres of clean potable water to create a workable concrete mix. Slight water adjustments may be required to obtain the desired consistency. Excessive addition of water will weaken the mix considerably.

Benefits

This product offers many advantages over conventional site-mixed or readymixed concretes:

- Constant available supply
- Eliminates inaccurate site mixing
- Increases site efficiency
- Convenient and user-friendly
- Eliminates wastage

Technical Data

Kilsaran Multi-Purpose Concrete is produced in an ISO 9001 quality-controlled environment. Kilsaran Multi-Purpose Concrete is a 30 N/mm² concrete as standard, however other strength classes are available upon request.

Density	2200kg/m ³	
Waterproofing & Anti Washout Agents	Available on Request	
Polypropylene Fibres	Available on Request	
Colour	Standard Grey	
Compressive Strength	28 Days	30 N/mm ²



Health & Safety

As with all cementitious-based materials and products, care must be taken to avoid contact with the skin. Please see the relevant Material Safety data Sheet online at www.kilsaran.ie.

Product Yield

Approximately
2.0-2.2kg/mm/m²
(1 bag = approximately
0.013m³)

Availability

- 25Kg bags
- Bulk silos



➤ For our latest news
& offers log onto
kilsaran.ie or
kilsaraninternational.co.uk





Rapid-Setting Concrete (40N)

Product Application

Kilsaran Rapid Setting Concrete is a fine concrete mix suitable for use in all general concrete work, both internally and externally where rapid setting and rapid strength development are required. Our Rapid Setting concrete is ideal for;

- Repair to footpaths, driveways, patios etc.
- Installation of ironwork and street furniture
- Haunching for paving and kerbing
- Post, sign and fence erection
- General concrete work where fast setting and rapid strength development are required.

Product Use

Kilsaran Rapid Setting Concrete should be mixed with 2.5 – 3.3 litres of clean potable water to create a workable concrete mix. Slight water adjustments may be required to obtain the desired consistency. Excessive addition of water will weaken the mix considerably. Kilsaran Rapid Setting Concrete is a fast setting mix only enough material that can be installed in 10 minutes.

Benefits

This product offers many advantages over conventional site-mixed or readymixed mortar:

- Rapid Setting allowing early trafficking
- Rapid strength development
- Convenient and user-friendly
- Eliminates wastage
- Available in easy to use, weatherproof, 10Kg plastic bags

Technical Data

Kilsaran Rapid Setting Concrete is produced in an ISO 9001 quality-controlled environment. Kilsaran Rapid Setting Concrete is a 40 N/mm² concrete as standard, however other strength classes are available upon request.

Pot Life	10 mins	
Initial Setting Time	20 mins	
Final Setting Time	60 mins	
Density	2200kg/m ³	
Waterproofing & Anti Washout Agents	Available on Request	
Polypropylene Fibres	Available on Request	
Colour	Standard Grey	
Compressive Strength	6 Hrs	10 N/mm ²
	24 Hrs	25 N/mm ²
	7 Days	30 N/mm ²
	28 Days	40 N/mm ²

Need an expert...

If you are looking for technical advice visit us online or call us directly on (Ireland) **+353 (01) 802 6300**, (UK) **+44 (0)161 872 8899**.

We'd be happy to help.



Health & Safety

As with all cementitious-based materials and products, care must be taken to avoid contact with the skin. Please see the relevant Material Safety data Sheet online at www.kilsaran.ie.

Product Yield

Approximately
2.0-2.2kg/mm/m²
(1 bag =
approximately 0.013m³)

Availability

- 25Kg bags
- 10Kg bags



For our latest news & offers log onto kilsaran.ie or kilsaraninternational.co.uk



Screeds

Floor screed products from Kilsaran have been trusted, specified and used by architects and engineers throughout Ireland and the UK for many years. Kilsaran's range of screed products includes self levelling and semi-dry cementitious screeds.

Kilsaran screeds are produced in an ISO 9001, 14001 and 50001 controlled environment to the requirements of EN 13813 and all our screeds are CE marked in accordance to the new Construction Products Regulation 305/2011.

With screed products suitable for domestic and commercial applications, Kilsaran have a screed solution for the private, public and healthcare sectors. Whether building a private house or multi-room apartment complex, Kilsaran screed products are the number one choice for a durable, high quality screed solution.





Cemfloor

Product Application

Kilsaran Cemfloor is a cementitious levelling screed for use in bonded, un-bonded and floating screed applications. Cemfloor is suitable for use internally, in residential and commercial applications and should be covered with a final floor covering. Cemfloor is suitable for application thicknesses between 25-80mm. Kilsaran Cemfloor is available delivered to site in ready-mixed concrete trucks or in dry pre-blended 25kg bags that only require the addition of water on site.

Product Use

Kilsaran Cemfloor should be used and installed at a flow of 240-260mm. Larger areas should be installed using a suitable screed pump. In all instances Cemfloor should be installed by an approved installer and in accordance with BS 8204-7: Code of Practice for Pumpable Self Smoothing Screeds, and Kilsaran's Cemfloor Installation Guide. For further information on the application and installation of our Cemfloor screed please see our Cemfloor Installation Guide.

Benefits

This product offers many advantages over conventional screeds:

- Ideal for use over under floor heating
- Rapid installation reducing labour costs.
- No laitance, meaning no sanding required.
- Screed is open to foot traffic after just 24 hours.
- Quicker Installation of final floor coverings due to screed only needing to dry to at 2.5% CM.
- Super flat finish means no need for follow on levelling compounds prior to application of floor finish.

Technical Data

Kilsaran Cemfloor screeds are produced in ISO 9001 quality-controlled and ISO 14001 environmental environments to the requirements of a cementitious levelling screed as set out in EN 13813. Kilsaran Cemfloor Screeds are available in CT- C20-F4, CT-C25-F5 and CT-C30- F6 screed strength classifications as set out in EN 13813.



EN 13813

Cementitious (CT) levelling screed material for use in internal floor applications.

Compressive Strength	C20	C25	C30
Flexural Strength	F4	F5	F6
Reaction to Fire	A1		
Shrinkage (28 days)	< 0.05%		
Thermal Conductivity	2.9 W/mK		
BRE Impact Test (2kg)	< 2mm		
Surface Regularity	SR2		

Minimum Laying Depths

Bonded	25mm
Un Bonded	30mm
Floating	35mm
Commercial	40mm
Over UFH Pipes	25mm



Health & Safety

As with all cement based materials and products, care must be taken to avoid contact with the skin. Please see the relevant Material Safety data Sheet online at www.kilsaran.ie.

Availability

- Ready-mixed (minimum delivery 1m³)
- Pre-blended (dry) 25kg bags



➤ For our latest news & offers log onto kilsaran.ie or kilsaraninternational.co.uk





Polymer-Modified Sand & Cement Floor Screed

Product Application

Kilsaran Polymer Modified Sand & Cement Screeds are semi dry levelling fibre reinforced screeds for use in domestic, commercial and industrial applications. They are suitable for use in bonded, un-bonded and floating screed constructions. Kilsaran Polymer Modified Sand & Cement Screeds can be laid in thinner depths than their traditional counterparts and provide a smooth level surface for easy installation of final floor coverings. They are not designed for use as a wearing surface.

Product Use

Kilsaran Polymer Modified Sand & Cement Screeds are for use internally as a levelling screed and should be mixed with clean potable water on site to produce a semi dry screed material. The material is placed, compacted and levelled by use of a screeding board. In all instances Kilsaran Sand & Cement Screeds should be used in accordance to BS 8204-3.

Benefits

This product offers many advantages over conventional site-mixed or ready-mixed screeding materials:

- Polymer modified
- Eliminates inaccurate site mixing
- Low shrinkage/good crack resistance
- Can be laid at thinner depths
- Eliminates wastage

Technical Data

Kilsaran Sand & Cement Screeds are produced in an ISO 9001 quality-controlled environment to the requirements of a cementitious screed as set out in EN 13813. Kilsaran Sand & Cement Screeds are a C30 F6 screed as standard, however they are available in all strength classifications as set out in EN 13813.

EN 13813. CT – C30 – F6

Cement based levelling screed material for internal use

Compressive Strength	C30
Flexural Strength	F6
Reaction to Fire	A1
Release of Corrosive Substances	CT



Health & Safety

As with all cementitious-based materials and products, care must be taken to avoid contact with the skin. Please see the relevant Material Safety data Sheet online at www.kilsaran.ie.

Product Yield

Approximately
1.9kg/mm/m²

Availability

- 25Kg bags
- Silos



➤ For our latest news
& offers log onto
kilsaran.ie or
kilsaraninternational.co.uk





Sand & Cement Floor Screed

Product Application

Kilsaran Sand & Cement Screeds are semi dry levelling fibre reinforced screeds for use in domestic, commercial and industrial applications. They are suitable for use in bonded, un-bonded and floating screed constructions. Kilsaran Sand & Cement Screeds provide a smooth level surface for easy installation of final floor coverings. They are not designed for use as a wearing surface.

Product Use

Kilsaran Sand & Cement Screeds are for use internally as a levelling screed and should be mixed with clean potable water on site to produce a semi dry screed material. The material is placed, compacted and levelled by use of a screeding board. In all instances Kilsaran Sand & Cement Screeds should be used in accordance to BS 8204-1.

Benefits

This product offers many advantages over conventional site-mixed or ready-mixed screeding materials:

- Increased productivity
- Eliminates inaccurate site mixing
- Low shrinkage/good crack resistance
- Convenient and user-friendly
- Eliminates wastage

Technical Data

Kilsaran Sand & Cement Screeds are produced in an ISO 9001 quality-controlled environment to the requirements of a cementitious screed as set out in EN 13813. Kilsaran Sand & Cement Screeds are a C25 F4 screed as standard, however they are available in all strength classifications as set out in EN 13813.

EN 13813. CT – C25 – F4

Cement based levelling screed material for internal use

Compressive Strength	C25
Flexural Strength	F4
Reaction to Fire	A1
Release of Corrosive Substances	CT



Health & Safety

As with all cementitious-based materials and products, care must be taken to avoid contact with the skin. Please see the relevant Material Safety data Sheet online at www.kilsaran.ie.

Product Yield

Approximately
1.9kg/mm/m²

Availability

- 25Kg bags
- Silos



Tip: Kilsaran Priming Slurry is ideal for installation of bonded screed



Sand & Cement / Bedding Mixes

Traditionally sand and cement has been used for a multitude of construction work within the building industry. These materials were typically site mixed by volume to create an end product ready for use. In recent years the consensus is that batching by weight produces a more accurate and consistent end product than mixing by volume ratios.

Here at Kilsaran we can offer the best of both. Our sand & cement and bedding mixes offer a computerised, batched by weight product, which is formulated designed and mixed in traditional mix proportions. The result is a product with prescribed mix proportions manufactured with immense accuracy.





General Purpose Sand & Cement

Product Application

Kilsaran General Purpose Sand & Cement mixes are a blend of sand and cement in traditional mix proportions. They are a general purpose material, ideal for;

- Concrete repair and small infills
- Bedding material for natural stone concrete and clay paving
- Haunching for kerbs and edging
- Bedding material for wall and peer cappings as well as fireplace installation

Product Use

Suitable for use in temperatures between +5°C and +30°C. Kilsaran General Purpose Sand & Cement should be mixed with 2.3-2.6 litres of clean potable water to create a semi-dry bedding mix. Adjustments to water can be made to achieve a more workable mix to suit the end application.

Benefits

This product offers many advantages over conventional site-mixed or ready-mixed bedding concretes:

- Eliminates inaccurate site mixing
- Available in two traditional mix ratios
- Convenient and user-friendly
- Eliminates wastage
- Available in easy to use, weatherproof, 10Kg plastic bags

Technical Data

Kilsaran General Purpose Sand & Cement mixes are produced in an ISO 9001 quality-controlled environment.

MIX OPTIONS		
3:1	4:1	Sand & Cement
3:1	4:1	Sand & White Cement (paving of granite)
3:1	4:1	Sand & Cement with polypropylene fibre



Health & Safety

As with all cementitious-based materials and products, care must be taken to avoid contact with the skin. Please see the relevant Material Safety data Sheet online at www.kilsaran.ie.

Product Yield

Approximately
2.0-2.1kg/mm/m²
(1 bag = approximately
0.013m³)

Availability

- 25Kg bags
- 10Kg
- Silos



➤ For our latest news
& offers log onto
kilsaran.ie or
kilsaraninternational.co.uk





Patio Bedding Mix

Product Application

Kilsaran Patio Bedding Mix is a bedding mix specifically formulated for the bedding and installation of paving units for patios and other domestic outdoor paved areas. Kilsaran Patio Bedding Mix is not suitable for the bedding of paved areas which will be subjected to vehicular traffic.

Product Use

Suitable for use in temperatures between +5°C and +30°C. The subgrade should be clean dry and not liable to subsidence. Poor subgrades can be improved using a layer of compacted Cl. 804. Kilsaran Patio Bedding Mix should be mixed with 2.2-2.6 litres of clean potable water to create a semi-dry / moist bedding mix.

Spread out a layer of the freshly mixed material on the area to be paved and screed off to leave a consistent bedding layer approximately 50mm-55mm in depth. Lift the paving flags into place and tamp into position with a pavers maul, ensuring the paving flag is fully embedded into the fresh Patio Bedding Mix. Allow at least 24 hours before opening to foot traffic.

Benefits

This product offers many advantages over conventional site-mixed or ready-mixed bedding materials:

- Eliminates inaccurate site mixing
- Suitable for construction of all foot trafficked patio areas.
- Convenient and user-friendly
- Eliminates wastage
- Available in easy to use, weatherproof, 10Kg plastic bags

Technical Data

Kilsaran Patio Bedding Mix is produced in an ISO 9001 quality-controlled environment.

Optimum Working Consistency	Semi-Dry / Moist
Density	1900kg/m ³
Colour	Natural Grey



Health & Safety

As with all cementitious-based materials and products, care must be taken to avoid contact with the skin. Please see the relevant Material Safety data Sheet online at www.kilsaran.ie.

Product Yield

Approximately
1.9kg/mm/m²
(1 bag =
approximately
0.013m³)

Availability

- 25Kg bags



Tip: Use Kilsaran Priming Slurry on base of smooth paving units to increase adhesion





Streetscape

As a market leader in dry mortar technologies, Kilsaran offer a range of specialist mortars, bedding concretes and primers for use in the design and construction of urban trafficked pavements, in villages, cities and town centres.

With a product range including bedding concretes, cementitious primers and flowable jointing mortars, Kilsaran can offer a complete streetscape range of products that are all produced in an ISO 9001, 14001 and 50001 controlled environment to the requirements of BS 7533.

Kilsaran's streetscape range offers a flexible delivery system with options of bulk deliveries in our silos, in addition to smaller single pack units. Our unrivalled knowledge in the design, construction and maintenance of trafficked pavements, coupled with our flexible delivery system and quality products, makes Kilsaran's Streetscape range the first choice for your streetscape solution.





High-Strength Bedding Concrete

Product Application

Kilsaran HSBC (High Strength Bedding Concrete) is a polymer modified fine concrete, designed for the bedding of pavements constructed with natural stone, granite setts, concrete flags and paving bricks. The product is formulated to meet the requirements of BS 7533 parts 7 & 12. Kilsaran HSBC can be used in the following applications;

- Bedding of concrete flags, paving bricks, natural stone and granite setts
- Haunching of kerbs and kerb setts
- Where the application requires a high strength construction

Product Use

Suitable for use in temperatures between +5°C and +30°C. Ensure the supporting base is stable, sound and free from any dust, dirt or grease. The supporting base should then be pre-soaked and have all ponded water removed prior to application.

Kilsaran HSBC should be mixed with 2.3-2.5 litres of clean potable water per 25kg bag of material to reach the desired moist consistency, suitable for bedding (as outlined in BS 7533). Material mixed from our bulk silos should be done so in accordance with the site training given by our technical team.

The fresh bedding concrete should be laid in depths of 10mm-75mm, onto the freshly primed base. Once the fresh HSBC has been placed and spread to the desired consistency, the pre-soaked and primed paving unit should be immediately bedded into position. In all instances this product should be used in strict accordance with BS 7533.

Benefits

This product offers many advantages over conventional site-mixed or ready-mixed rendering mortars:

- Eliminates inaccurate site mixing
- Complies with BS 7533
- Long term durability
- Convenient and user-friendly
- Eliminates wastage

Technical Data

Kilsaran HSBC is produced in an ISO 9001 quality-controlled environment to the requirements of a bedding concrete as set out in BS 7533.

Compressive Strength (28 days)	43 N/mm ²
Density	2150 kg/m ³
Adhesion Strength	> 1.4 N/mm ²
Adhesion Strength (with priming slurry)	> 2.0 N/mm ²
Modulus of Elasticity	16,000
Shrinkage	<0.1%



Health & Safety

As with all cementitious-based materials and products, care must be taken to avoid contact with the skin. Please see the relevant Material Safety data Sheet online at www.kilsaran.ie.

Product Yield

Approximately
2.1-2.2kg/mm/m²
(1 bag =
approximately 0.025m³)

Availability

- 25Kg bags
- Bulk silos
- Also available in eco friendly range



Tip: Use in conjunction with Kilsaran Priming Slurry





Priming Slurry

Product Application

Kilsaran Priming Slurry is a polymer modified cementitious slurry, designed to give exceptional bond between bases, all types of paving units and their bedding material. The product is formulated for use in conjunction with Kilsaran HSBC to provide an adhesion strength of greater than 2 N/mm², as per the requirements of BS 7533.

Product Use

Suitable for use in temperatures between +5°C and +30°C. Ensure the supporting base is stable, sound and free from any dust, dirt or grease. Once clean the base should be pre-soaked and have all ponded water removed prior to application of the priming slurry.

Kilsaran Priming Slurry should be mixed with 5.0-5.4 litres of clean potable water per 20kg bag of material for 3-4 minutes to reach the desired consistency, suitable for priming.

Once mixed apply a 1mm-2mm coat of priming slurry to the pre-soaked base. Following installation of the bedding material, such as Kilsaran HSBC, all paving units should be pre-soaked and then have their bedding face coated with a 1mm-2mm coat of the priming slurry and then placed into position.

Benefits

This product offers many advantages over conventional site-mixed or ready-mixed rendering mortars:

- Eliminates inaccurate site mixing
- Complies with BS 7533
- Improves adhesive strength of paving
- Convenient and user-friendly
- Eliminates wastage

Technical Data

Kilsaran Priming Slurry is produced in an ISO 9001 quality-controlled environment to the requirements of materials as set out in BS 7533.

Adhesion Strength (28 days)	>2 N/mm ²
Pot Life	60 min
Coverage (Yield)	9m ² -17m ² /20kg bag
Colour	Standard Grey



Health & Safety

As with all cementitious-based materials and products, care must be taken to avoid contact with the skin. Please see the relevant Material Safety data Sheet online at www.kilsaran.ie.

Product Yield

Approximately 1.2kg/mm²
(1 bag = approximately 17m³ - single coat and 9m² based on two priming coats, i.e. base and paving unit)

Delivery

- 20Kg bags



For our latest news & offers log onto kilsaran.ie or kilsaraninternational.co.uk





Rapid-Set Jointing Mortar

Product Application

Kilsaran Rapid Set Jointing Mortar is designed for the jointing of pavements units constructed with clay, natural stone, granite setts, concrete flags and paving bricks. The product is formulated to meet the requirements of BS 7533 parts 7 & 12. Kilsaran Rapid Set Jointing Mortar can be used in the following applications;

- Jointing of natural stone setts and slabs
- Joints to kerbing
- Jointing of concrete flags
- Jointing of clay pavers

Product Use

Suitable for use in temperatures between +5°C and +30°C. Ensure the paving is free from any dust, dirt or grease, pre-soaked and having all ponded water removed prior to application. Kilsaran Rapid Set Jointing Mortar should be mixed with approximately 4.25 litres of clean potable water, per 25kg bag of material, for 3 minutes to reach a lump free flowing consistent slurry. Do not remix or add additional water to the mix. Only mix enough material which can be placed in within 10 minutes. Pour the fresh mortar onto the prepared paved area and chase into all joints with a soft brush or squeegee. Ensure joints are full, allowing for settlement and remove any excess material with the squeegee once joints are full. Spray a mist of water onto the area at all times to aid the cleaning process. When the joints are sufficiently hard (this could be as soon as 15 minutes) remove any residual material with a constant flow of water and a diagonal sweeping action. A specifically designed belt cleaner can also be used. Timing and experience are critical to ensure no staining occurs. Once cleaned inspect all areas to ensure all excess mortar is removed.

Benefits

This product offers many advantages over conventional site-mixed or ready-mixed rendering mortars:

- Rapid Setting – Initial set in 15 minutes
- Shrinkage compensated
- Light foot traffic in just 1 hour
- Complies with BS 7533
- Long term durability
- Convenient and user-friendly
- Eliminates wastage
- Promotes cleaner and safer sites

Technical Data

Kilsaran Rapid Set Jointing Mortar is produced in an ISO 9001 quality-controlled environment to the requirements of a jointing as set out in BS 7533.

Compressive Strength (28 days)	> 53 N/mm ²
Flexural Strength (28 days)	> 9 N/mm ²
Density	2060 kg/m ³
Adhesion Strength	> 1.5 N/mm ²
Modulus of Elasticity	20,000 N/mm ²
Shrinkage	<0.1%
Initial Set	15 min
Final Set	60 min
Colour	Standard Grey



Health & Safety

As with all cementitious-based materials and products, care must be taken to avoid contact with the skin. Please see the relevant Material Safety data Sheet online at www.kilsaran.ie.

Product Yield

Approximately
13 litres per 25kg bag

Availability

- 25Kg bags



For our latest news
& offers log onto
kilsaran.ie or
kilsaraninternational.co.uk





RRC 60

Product Application

Kilsaran RRC 60 is designed for use as a reinstatement concrete, and in particular can be used as per clause 1032 and 1106 of the NRA specification for road works (2000). Kilsaran RRC 60 is ideal for;

- Reinstating footpaths, driveways, patios
- Surface surrounds of posts, railings and bollards
- Surface surrounds to services in footpaths, e.g. hydrants etc.
- Reinstating surfaces, where early trafficking is required.

Product Use

Suitable for use in temperatures between +5°C and +30°C. Ensure the area is free from any dust, dirt or grease, and pre-dampened prior to application. The use of a suitable primer (such as Kilsaran Priming Slurry) is recommended for smooth substrates prior to placing. Kilsaran RRC 60 should be mixed with 2.75-3.15 litres of clean potable water per 25 kg bag, to achieve a workable concrete mix. Mixing can be carried out by a rotary or paddle mixer or by hand. Only mix enough material that can be placed within 5 minutes. Once mixed place the fresh material in the prepared area to a depth of 25mm-100mm. It is recommended to cut or scable existing concrete to a depth of at least 10mm before placing RRC 60, as feather edge finishing is not recommended. Once placed, the reinstated area should be cured with a water based curing membrane and protected from premature drying and cold weather. It is recommended that the area is also cured in accordance with clause 1027 of the NRA specification for roadworks (2000).

Benefits

This product offers many advantages over conventional site-mixed or ready-mixed rendering mortars:

- Rapid Setting – Final set in 15 minutes
- Shrinkage compensated
- Light foot traffic in just 1 hour
- One part component
- Long term durability
- Poly fibre modified
- Eliminates wastage
- Freeze thaw resistant

Technical Data

Kilsaran RRC 60 is produced in an ISO 9001 quality-controlled environment.

		Flexural	Compressive
Strength	1 Hour	3 N/mm ²	10 N/mm ²
	2 Hours	4 N/mm ²	15 N/mm ²
	4 Hours	5 N/mm ²	20 N/mm ²
	1 Day	6 N/mm ²	30 N/mm ²
	7 Day	11 N/mm ²	50 N/mm ²
	28 Days	12 N/mm ²	60 N/mm ²
Fresh Density		2200kg/m ³	
Pot Life		5 min-10 min	
Initial Set		10 min	
Final Set		15 min	



Health & Safety

As with all cementitious-based materials and products, care must be taken to avoid contact with the skin. Please see the relevant Material Safety data Sheet online at www.kilsaran.ie.

Product Yield

Approximately
2.2kg/mm/m³
(1 bag =
approx 0.0125m³)

Availability

- 25Kg bags



For our latest news
& offers log onto
kilsaran.ie or
kilsaraninternational.co.uk





T60 Rapid Bedding Mortar

Product Application

Kilsaran T60 is a rapid setting, high strength bedding mortar designed for the bedding of ironworks as part of the Department of Transport Part 4 HD 27/94, where mortars for bedding ironwork (such as manhole cover frames) during repairs should reach 20N/mm² within 2 hours. Kilsaran T60 is also ideal for use in the following applications;

- Bedding and raising street ironwork
- Manhole frames and gullies
- Bedding posts, railings and bollards
- Bedding of precast units
- Emergency bedding of stone setts, slabs and cobbles

Product Use

Suitable for use in temperatures between +5°C and +30°C. Ensure the area is free from any dust, dirt or grease, pre-soaked and having all ponded water removed prior to application. Kilsaran T60 should be mixed in a forced action mixer or by hand with 2.5-2.7 litres of clean potable water, until a stiff, zero slump and homogenous mix is achieved. Mix only enough material that can be placed and finished in 5-10 minutes. Once mixed place the fresh material in the prepared area in depths from 10mm-75mm. For applications of greater depths the material can be bulked out with well graded 10mm aggregate. When bedding frames ensure to position and level as soon as possible after placing. Exposed areas should be given a floated finish. Once initial set of the material has taken place the area can be back filled.

Benefits

This product offers many advantages over conventional site-mixed or ready-mixed rendering mortars:

- Rapid Setting – Initial set in 15 minutes
- Shrinkage compensated
- Light foot traffic in just 1 hour
- High early and ultimate strength
- Long term durability
- Convenient and user-friendly
- Eliminates wastage
- Minimum traffic disruption

Technical Data

Kilsaran T60 is produced in an ISO 9001 quality-controlled environment.

		Flexural	Compressive
Strength (28 days)	1 Hour	5 N/mm ²	20 N/mm ²
	2 Hours	5.5 N/mm ²	25 N/mm ²
	1 Day	7 N/mm ²	35 N/mm ²
	7 Day	8 N/mm ²	45 N/mm ²
	28 Days	10 N/mm ²	50 N/mm ²
Fresh Density		2200kg/m ³	
Pot Life		5 min-10 min	
Initial Set		15 min	
Final Set		20 min	



Health & Safety

As with all cementitious-based materials and products, care must be taken to avoid contact with the skin. Please see the relevant Material Safety data Sheet online at www.kilsaran.ie.

Product Yield

Approximately
13 litres per 25kg bag

Availability

- 25Kg bags



For our latest news
& offers log onto
kilsaran.ie or
kilsaraninternational.co.uk



Grouts

Today's engineering techniques and practices are more and more calling for fast setting and high strength, structural construction grouts. Kilsaran's range of grouts includes high strength non-shrink products and dry pack materials to accommodate a multitude of grouting needs.

Kilsaran grouts are produced in an ISO 9001 and 14001 controlled environment and all are formulated as single component products for ease of use.





NSG 2601

Product Application

Kilsaran NSG 2601 is, a non-shrink construction grout, designed for use in thicknesses ranging from 10mm – 100mm, in the following applications;

- Stanchion baseplates
- Bedding precast units
- Machine & Plant baseplates
- Anchoring
- Jointing precast concrete panels
- Grouting bearing plinths
- Duct Filling

Product Use

Suitable for use in temperatures between +5°C and +30°C. Ensure all surfaces are clean and free from dust, dirt and grease. Pre-soak area to be grouted a minimum of 4 hours prior to installation. Remove any ponded water. Mix using a suitable paddle mixer or pump mixer. To create a highly flowable grout, mix the contents of a 25kg bag with 5 litres of water for 2-3 minutes. Less water can be added to create a plastic or stiff mix for plinths and bedding precast applications.

Baseplate: Ensure that a sufficient supply of material will be mixed in order to avoid interruption when filling. Always pour from one side and use air vents where necessary to avoid air entrapment. Pour from a height to ensure maximum compaction and use a rod to aid filling. Do not vibrate the grout. Temporary levelling shims should be greased if they are to be removed after grout hardenes.

Formwork: As the grout is free flowing it is important to ensure the formwork is sufficiently prepared to avoid leaks. A sacrificial concrete mix can be used to fix the baseplate shutter or as a bern. Keep unrestrained areas around the baseplate to less than 150mm.

Curing: Should be as per standard practices for cement based products. Grout should be protected from strong sunlight and cold weather.

Benefits

This product offers many advantages over conventional site-mixed or ready-mixed grouts:

- Non Shrink formula
- Can be pumped or poured
- Long term durability
- Eliminates wastage
- High early and ultimate strength
- High workability with no segregation
- Convenient and user-friendly
- Chloride free

Technical Data

Kilsaran NSG 2601 is produced in an ISO 9001 quality-controlled environment to the requirements of the Specification for Highway Works Vol. 1: Clause 2601 in NRA and Department of Transport Publications.

	1 Day	7 Day	28 Day
Compressive Strength	21 N/mm ²	45 N/mm ²	60 N/mm ²
Flexural Strength	5 N/mm ²	7 N/mm ²	10 N/mm ²
Density (Fresh)	2200 kg/m ³		
Early Expansion	1.5%		
Segregation (Glass Plates)	Nil		
Bleeding (Glass Plates)	Nil		
Initial Set	5 hours		
Final Set	7 hours		
Compressive Strain	< 1%		



Health & Safety

As with all cementitious-based materials and products, care must be taken to avoid contact with the skin. Please see the relevant Material Safety data Sheet online at www.kilsaran.ie.

Product Yield

Approximately
13-13.5 litres
per 25kg bag

Availability

- 25Kg bags
- Silos



For our latest news
& offers log onto
kilsaran.ie or
kilsaraninternational.co.uk





DryPack 50

Product Application

Kilsaran DryPack 50 is a packing mix specifically formulated for joint filling in structures, to eliminate the requirement of shuttering. It is ideal for use as follows;

- Jointing of precast panels
- Creating a shutter for grouting applications
- Bedding of precast concrete panels

Product Use

Suitable for use in temperatures between +5°C and +30°C. The substrate should be sound, clean, dry, and grease free. The area should be pre-soaked prior to application and have all ponded water removed. Mix the contents of a 25kg bag with 2.0-2.5 litres of clean potable water. Slight adjustments in water may be required to achieve the desired workability. Excessive additions of water will significantly reduce the strength of the hardened product. Kilsaran DryPack 50 is only suitable for use in a stiff mortar state, with only enough water added to enable cohesiveness in the mix.

Once mixed place the fresh mortar mix in depths ranging from 5mm-100mm. Exposed surfaces should be given a tight float finish.

Benefits

This product offers many advantages over conventional site-mixed or ready-mixed materials:

- Eliminates inaccurate site mixing
- Suitable for jointing and bedding of panels
- Convenient and user-friendly
- Eliminates wastage

Technical Data

Kilsaran Dry Pack 50 is produced in an ISO 9001 quality-controlled environment.

	1 Day	7 Day	28 Day
Compressive Strength	15N/mm ²	40N/mm ²	50N/mm ²
Flexural Strength	-	-	8N/mm ²
Density	2200kg/m ³		
Pot Life	30 min		
Initial Set	180 min		
Final Set	240 min		
Colour	Standard Grey		

Need an expert...

If you are looking for technical advice visit us online or call us directly on (Ireland) **+353 (01) 802 6300**, (UK) **+44 (0)161 872 8899**.

We'd be happy to help.



Health & Safety

As with all cementitious-based materials and products, care must be taken to avoid contact with the skin. Please see the relevant Material Safety data Sheet online at www.kilsaran.ie.

Product Yield

Approximately 2.1-2.2kg/mm/m²
(1 bag = approximately 0.012m³)

Availability

- 25Kg bags
- Bulk silos



For our latest news & offers log onto kilsaran.ie or kilsaraninternational.co.uk



Repair Mortars

Repair and reinstatement of concrete and masonry is a well-established discipline within the construction industry. At Kilsaran we have an ever expanding range of repair products. With products formulated to repair or reinstate complete works, to products designed to resurface localised areas, Kilsaran have a repair mortar to accommodate a multitude of repair or renovating needs.

Kilsaran repair mortars are produced in an ISO 9001, 14001 and 50001 controlled environment and all are formulated as single component products for ease of use.





Pro-Fix 100

Product Application

Kilsaran Profix 100 is a rapid setting mortar mix specifically formulated for a wide range of resurfacing applications between 2mm and 15mm in depth. Some of these applications include;

- Resurfacing of concrete pathways
- Resurfacing of concrete driveways
- Resurfacing and repair of concrete stairwells and walkways, where early trafficking is required.

Product Use

Suitable for use in temperatures between +5°C and +30°C. The concrete substrate (existing concrete) must be mature (at least 6 weeks old) and should be clean, dry and free from all dust and grease. Paints, sealers, and biological growth must be removed prior to application of the product. Prior to application, dampen the substrate with clean potable water. Absorbent substrates should be pre soaked and have all ponded water removed. Expansion joints in the substrate must be carried through the resurfacing material. Mix the contents of a 25kg bag with 3.0-3.3 litres of clean potable water for 1-2 minutes. Only mix enough material that can be placed and finished in 15 minutes.

Once mixed, pour the fresh material onto the prepared substrate and level using a steel float or trowel. The overall finished thickness of Kilsaran Profix 100 should be 2mm-15mm. Once the material has stiffened slightly, edge and give the desired finish, such as brushed to create a non-slip surface.

Benefits

This product offers many advantages over conventional site-mixed or ready-mixed resurfacing materials:

- Thin application between 2mm and 15mm
- Rapid setting and early strength
- Early trafficking
- Convenient and user-friendly
- Chloride free
- Provides a durable finish

Technical Data

Kilsaran Profix 100 is produced in an ISO 9001 quality-controlled environment.

	1 Day	7 Day	28 Day
Compressive Strength	25 N/mm ²	35 N/mm ²	50 N/mm ²
Pot Life	15-20 min		
Initial Set	20 min		
Final Set	45 min		
Open to Foot Traffic	1.5 hours (at 20°C)		
Open to Vehicular Traffic	24 hours		



Health & Safety

As with all cementitious-based materials and products, care must be taken to avoid contact with the skin. Please see the relevant Material Safety data Sheet online at www.kilsaran.ie.

Product Yield

Approximately
2.0kg/mm/m²

Availability

- 25Kg bags



For our latest news
& offers log onto
kilsaran.ie or
kilsaraninternational.co.uk





Pavement Repair Concrete

Product Application

Kilsaran Pavement Repair Concrete is a fine concrete mix specifically formulated for a wide range of pavement repair applications between 30mm and 150mm in depth. Greater depths are possible using a layer on layer method. Kilsaran Pavement Repair Concrete can be used as per clause 1032 and 1106 of the NRA Specification for Roadworks. Some of these applications include;

- Reinstating footpaths, driveways and walkways
- Surrounds to posts, railings and bollards
- Installing services in footpaths (hydrants etc.)

Product Use

Suitable for use in temperatures between +5°C and +30°C. Substrates should be clean, dry and free from all dust and grease. The use of a bonding agent is recommended. Dampen substrate surfaces prior to installation, ensuring to avoid saturation. Add the contents of a 25kg bag to 2.5-3.0 litres of clean potable water. Mix the material for 1-2 minutes in a suitable drum mixer or by using a suitable paddle mixer. Using excess water will affect the overall performance of the product. Kilsaran Pavement Repair Concrete should be placed and finished within 20 minutes of mixing.

Once mixed, place the fresh material onto the prepared substrate and level using a steel float or trowel. The overall finished thickness of Kilsaran Pavement Repair Concrete should be 30mm-150mm. Greater depths should be laid in a layer on layer method. Once the material has stiffened slightly, edge and give the desired finish, such as brushed to create a non-slip surface. The newly installed area should be cured in accordance with CL. 1027 of the above mentioned standard specification.

Benefits

This product offers many advantages over conventional site-mixed or ready-mixed materials:

- Shrinkage compensated
- Early trafficking
- Chloride free
- Freeze thaw resistant
- Rapid setting and early strength
- Convenient and user-friendly
- Provides a durable finish

Technical Data

Kilsaran Pavement Repair Concrete is produced in an ISO 9001 quality-controlled environment.

	1 Day	2 Day	7 Day	28 Day
Compressive Strength	20 N/mm ²	30 N/mm ²	45 N/mm ²	50 N/mm ²
Flexural Strength	-	-	-	12 N/mm ²
Pot Life	20 min			
Initial Set	40 min			
Final Set	60 min			
Open to Foot Traffic	1.5 hours			
Open to Vehicular Traffic	24 hours			



Health & Safety

As with all cementitious-based materials and products, care must be taken to avoid contact with the skin. Please see the relevant Material Safety data Sheet online at www.kilsaran.ie.

Product Yield

Approximately
2.0-2.2kg/mm/m²

Availability

- 25Kg bags



For our latest news
& offers log onto
kilsaran.ie or
kilsaraninternational.co.uk



Disclaimers/Important Information

This Brochure

We have taken every reasonable precaution to ensure that all details contained in the brochure are accurate. We are an innovative company and we seek to develop our product ranges and product lines on an on-going basis. We recommend that you check online www.kilsaran.ie or call directly Tel: 01 8026300 to ensure that you have the most up to date information to hand.

Technical Information

Technical documentation for each product is now available on our website. Documents including technical data sheets, material safety data sheets, CE marking, declaration of performance and any certificates or guidance documents are available on our website at <http://www.kilsaran.ie/create/technical-downloads/> Please refer to this resource for the most up to date information on any of our dry products.

Our Products

When our product is delivered and before it is used, the customer should satisfy themselves that the product is free from defects or damage. Kilsaran cannot accept liability for replacement costs and/or delays incurred as a result of product that is defective or damaged which has already been used. Any defects must be notified to Kilsaran immediately.

Illustrations

Through the use of the most modern photographic techniques available we endeavour to ensure that the photographic illustrations of our products in this brochure are as accurate as possible. We do recommend that any final decision is based upon viewing a sample of the product where possible. These samples can be provided by centres stocking our product, your Kilsaran Representative or at our manufacturing facility in Brownstown Co. Kildare.

Returned Products

Kilsaran does not accept returns on any materials.

Commitment to Customer Satisfaction

We strive to provide the best products in the market backed up by superior customer service. If our products or service do not meet your expectations please contact us immediately.

