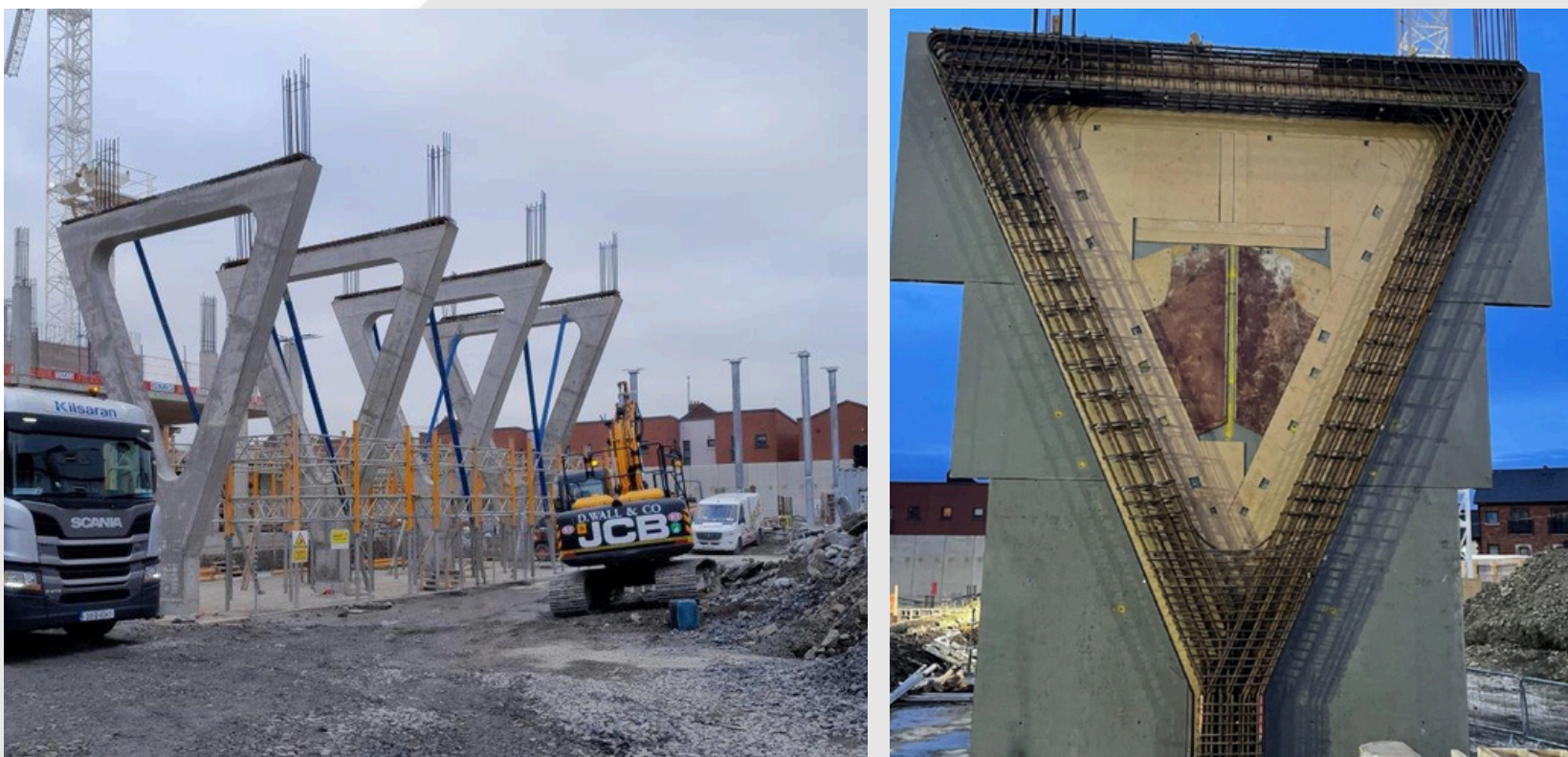




case study

Grand Canal Harbour Dublin 8, Dublin

Featured Products: **Ready-Mix Concrete, Concrete Blocks, Bulk Aggregates, M4 Masonry Mortar, High Strength Bedding Concrete, Priming Slurry, Rapid Set Jointing Mortar**



Located next to the Guinness Storehouse and within the historic Guinness Quarter, the Grand Canal Dock redevelopment represents a bold and transformative vision for one of the city's most iconic and historic areas.

Kilsaran supplied a number of products to the project, from Ready-Mix Concrete, Concrete Blocks, Bulk Aggregates, High Strength Bedding Concrete, Priming Slurry to Rapid Set Jointing Mortar and M4 Masonry Mortar.

The highlight of the project came with the construction and delivery of four slender Y columns used to support a six-story building directly facing the harbour building. By utilising a controlled pouring process, not only was the structural integrity of the project maintained but also the aesthetic quality of the exposed Y columns, which were intended to have a fair faced exposed concrete finish in fit with the overall design theme.



Concrete Products and Aggregates:

Ready-Mix Concrete

Concrete Blocks

Bulk Aggregates

KPRO:

High Strength Bedding Concrete

Priming Slurry

Rapid Set Jointing Mortar

M4 Masonry Mortar

Main Contractor:

Walls Construction

Architect:

BKD Architects

Civil & Structural Engineer:

DBFL Consulting Engineers

Client:

Marlet Property Group Limited

