

Grangegorman Academic Hub and Library Grangegorman, Co. Dublin



Contractor: Townlink Construction & OHLA group

Architect: O'Donnell & Tuomey

Civil & Structural Engineer: Fluid Structures Engineering

Sector: Educational

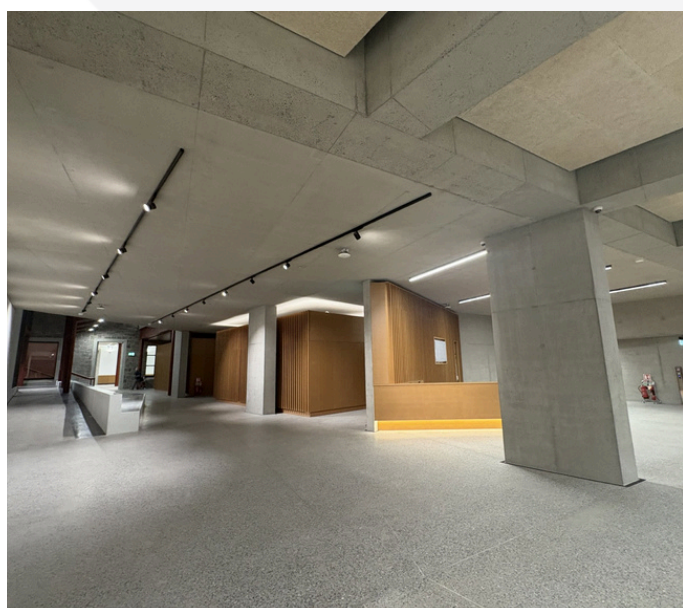
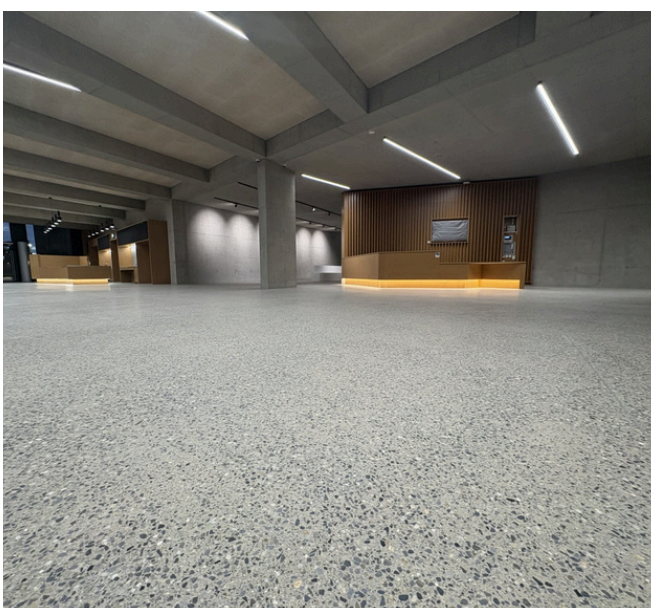
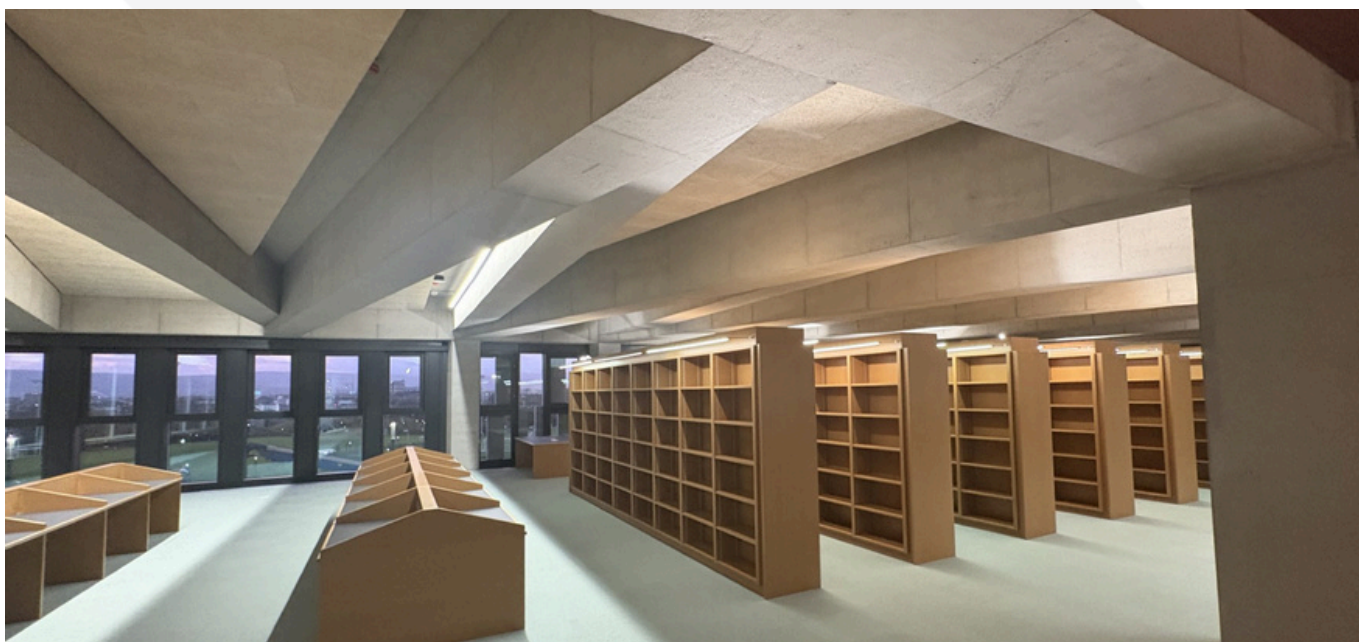
Region: Leinster

Year of Completion: 2025

The Academic Hub is a landmark building at the heart of Technological University Dublin's Grangegorman Campus. From initial engagements, Kilsaran were advised that much of the concrete in this project was to be exposed.

Kilsaran provided Ready-Mix Concrete, Concrete Blocks and Aggregates. To minimise variations in colour across exposed concrete elements, one carefully selected mix was used throughout and supplied from the local Millennium plant in Ballycoolin, ensuring a consistent appearance across the build.

Masonry Mortar M4 was used to provide durable, high-strength joints, while our Newgrange, Killeen and Grange paving products were used across the external areas, to ensure both durability and cohesion throughout the campus.



Kilsaran PRODUCTS

Concrete Products & Aggregates:

- Ready-Mix Concrete
- Concrete blocks
- Aggregates

KPRO

- Masonry Mortar M4

Paving:

- Newgrange Flag Silver Granite 450mm x 450mm
- Killeen Flag Autumn Brown 4 Size Mix
- Grange Block Autumn Brown & Oyster 4 Size Mix

